

### Patio Heaters and the Environment

People have always enjoyed being able to spend time outside and modern LPG patio heaters contribute to this lifestyle. They are far safer and environmentally sensitive than the alternatives. However it is up to all of us to use our energy products in responsible and efficient manner. Some simple guidelines to ensure that you enjoy an alfresco lifestyle whilst taking care of the wider environment are:

- Always ensure you turn down your interior heating appliances when you go outside for prolonged periods
- Patio Heaters do not heat the air, they heat people and things so ensure that you position your seating area close to the appliance
- Avoid using your patio heater on full power as much as possible
- Turn your patio heater off as soon as the weather warms up
- Wear sensible outside clothes during the early spring and autumn rather than turn your heater to full power
- If you spend a lot of time in your garden, consider purchasing a specially designed gazebo to increase the effectiveness of your heater but never use one that is not designed to contain a patio heater
- Position the heater away from strong winds

And finally.....

When you go inside for the rest of the day - TURN YOUR PATIO HEATER OFF!

If you would like any other advice about saving energy in your home or business, please contact the Energy Saving Trust on 020 7222 0101 ([www.est.org.uk](http://www.est.org.uk)).

### Safety Advice

**Important!** Please read and follow these few simple guidelines in conjunction with the manufacturers instructions for the safe use of your LPG Patio Heater and to ensure the Health and Safety of yourself and others who may be affected.

- Patio heaters should comply with EN 14543 and are for outdoor use or amply ventilated areas only. The combustion products leaving the heater are very hot. On no account should they be used in an enclosed space where less than 25% of the walls surface area is directly open to outdoors, or inside a tent or marquee or close to umbrellas or other combustible materials due to the possibility of fire or highly poisonous carbon monoxide being produced.
- Awnings should not impede the escape of combustion products. Conventional awning especially those made of plastic are unsuitable. Fire retardant and some fabric awnings may be used, only if the manufacturer's instructions permit it.
- Care is needed when positioning a heater near terraces or balconies to ensure the products of combustion do not adversely affect people or property at burner level.
- Heaters should not be moved when alight. Turn off at the regulator before moving the appliance.
- Heaters should be positioned in areas shielded from the wind.
- If the heater is a table top version, some accessible parts may be very hot so keep young children at a safe distance.
- If a free standing heater appears unstable in a high wind, the gas should be turned off at the cylinder valve, the cylinder should be disconnected and removed and the heater moved to a position out of the wind.

- Assembly of heaters should be carried out by a competent person in accordance with the manufacturer's instructions and the assembly should then be tested before use to ensure it is gas-tight and operates correctly.
- The patio heater should have been supplied with a special 27mm clip on regulator with suitable clips to a hose complying with BS3212 type 2 or BS EN 1763 Class B. If a standard butane (28 mbar) or propane 37 (mbar) regulator is fitted your local Calor Gas Dealer will be able to give advice on a suitable replacement
- The patio cylinder (Green with red shroud) and fitted with a 27mm valve should be used.
- The regulator should be in the "off" position when not in use.
- Heaters should be regularly serviced by a competent person in accordance with the manufacturer's instructions, particularly prior to the start of a new season.
- ***It is a legal requirement for heaters supplied by landlords for use at their premises to have heaters checked for safety at intervals not exceeding 12 month and this must be carried out by a Gas Safe registered installer under the Gas Safety (Installation and Use) Regulations. The term 'Landlord' is widely defined. If in doubt refer to the Regulations, or the Guidance both of which are available from HSE Books (01787 881165).***
- The condition of the flexible hose connecting the regulator to the heater inlet should be checked monthly and each time the cylinder is replaced. If it shows signs of cracking, splitting or other deterioration, it should be exchanged for new hose of the same length, manufactured to BS 3212 type 2 or BS EN 1763 Class B
- LPG is odourised to enable accidental releases to be detected by smell. If a persistent gas smell is present, the heater should not be used, or if alight, the gas supply should be turned off at the regulator. The cause should be investigated and rectified before the heater is used again.
- Please ensure the safe use and storage of cylinders. A separate information leaflet Using Calor Gas Safely is available from your local Calor Dealer.

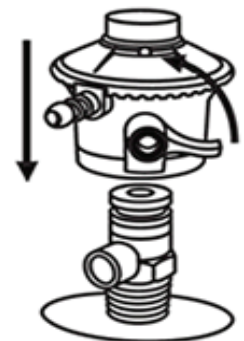
### Changing your cylinder

**There are various 27mm regulators available. Please refer to your manufacturers instructions for guidance on how to connect and disconnect the regulator.**

**Reminder:** Patio Gas Cylinders use a 27mm clip on valve and clip on regulators. Unlike the other propane cylinders you do not need a spanner to connect the regulator



1. Make sure that you are using an easy clip-on regulator.
2. If the cylinder has a yellow tamper evident cap, please remove and discard
3. Make sure that:
  - a) The regulator is switched to the 'off' or disconnect position
  - b) All taps on the appliance are closed
  - c) The connecting pipe to the appliance is correctly fitted
  - d) The valve is clean and free from debris
4. Put regulator on top of the cylinder valve. Place hand on top of the regulator and push down firmly and vertically until you hear a click.
5. Once the regulator is correctly fitted, switch to 'on' position as directed by manufacturer instructions on the regulator.
6. ALWAYS turn the switch to the OFF position after use



## Disconnecting a Patio Cylinder

There are various 27mm regulators available. Please refer to your manufacturers instructions for guidance on how to connect and disconnect the regulator.



1. Make sure the regulator is turned to the 'off' position and that the appliance flame is extinguished.
2. To remove the regulator from the cylinder valve, please refer to the manufacturers instructions.
3. REMEMBER: Do not attempt to disconnect the cylinder if the regulator is in the on/open position.

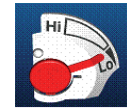
## 9. Patio Gas Cylinders with 'Gas Trac'



The new 'Gas Trac' on Patio Gas shows the approximate level of gas left in the cylinder.

When the cylinder is more than half full of gas the 'Gas Trac' will point to Hi

When the 'Gas Trac' points to Lo, a refill cylinder could soon be required



**If you require further advice please contact the  
Technical Help Desk at Tachbrook Park (0845 602 1143)**

**CALOR GAS EMERGENCY SERVICE – 0845 7 444999  
(ALL CALLS CHARGED AT LOCAL RATE)**

The information in this document is intended to give guidance and believed to be accurate and represent good practice at the time of publication. It does not replace the need to consult other formal documents where further information may be required.

No responsibility or liability is accepted by Calor Gas Limited for any loss or damage arising out of the information given. It is important that users of this publication adhere to all legal requirements, Regulations, CoP's and Standards, particularly, those relating to gas safety.

All rights reserved. No part of this publication may be reproduced, stored in a retrieval system or transmitted in any form, or by any means, electronic, electrostatic, magnetic tape, mechanical, photocopying, recording, or otherwise, without permission in writing from Calor Gas Ltd.